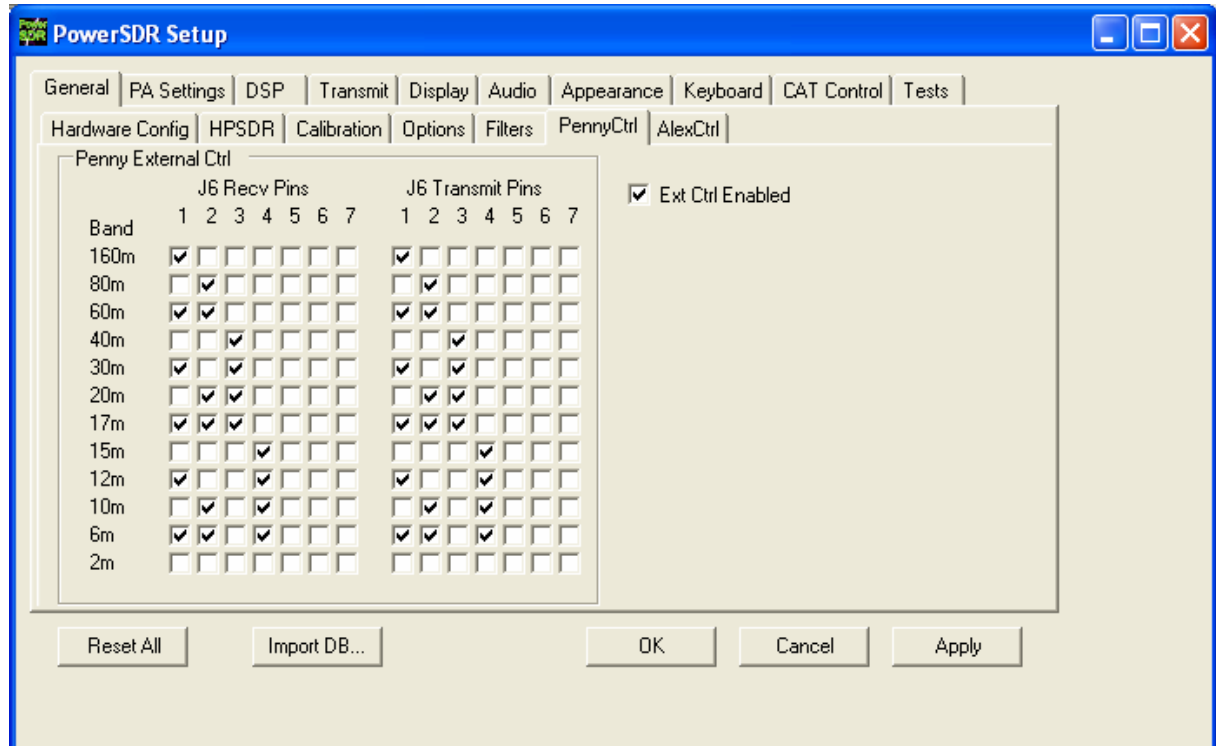


100W_PA Rev.2 Filter Settings in PennyCtrl

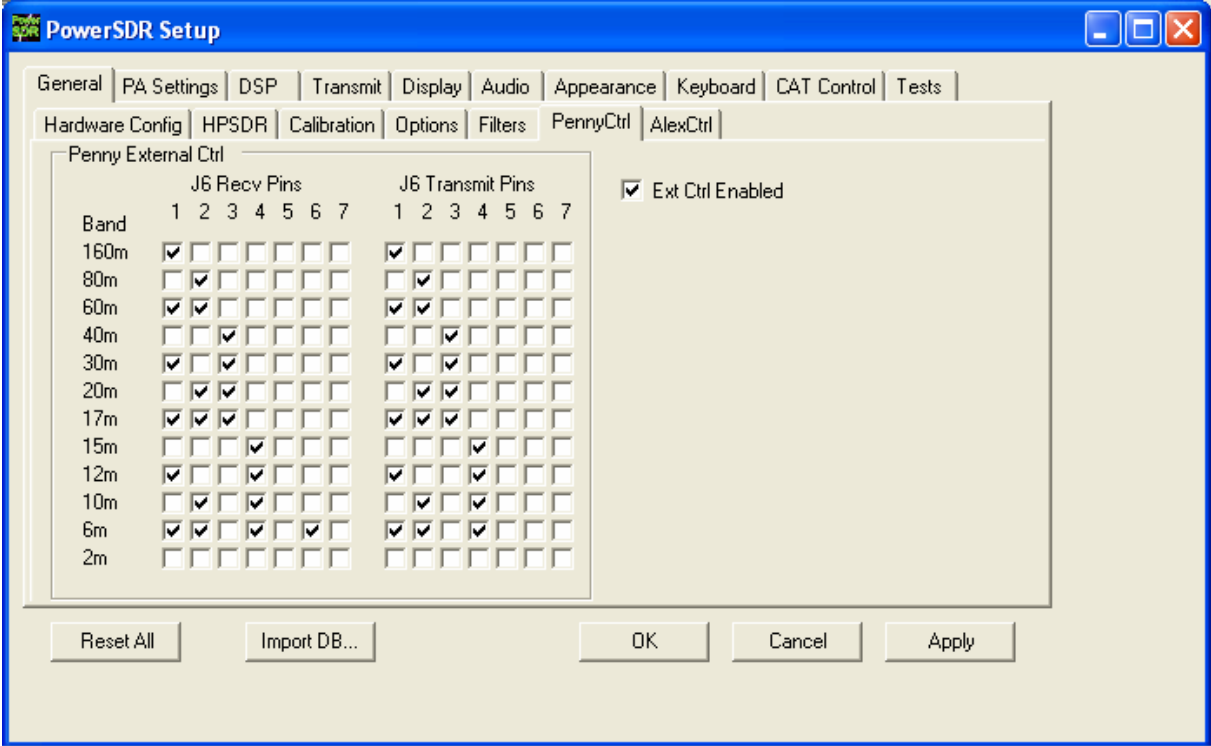
As there was a conflict with configuration of the filter settings on 10m (J6 Transmit Pin 6 was used both for the 10m LPF and the 6m LNA) the coding for the CPLD was changed to Rev.5.

When you want to use the filters in transmit and receive path you should check the settings in PennyCtrl as shown.



Outside the amateur bands the 6m LPF is always engaged. This makes it possible to receive frequencies outside the amateur bands without attenuation through the LPF.

If you have a 6m LNA with your antenna switch you may use this filter setting for engaging the LNA on 6m:



If you do not want to use any filter in receive path you can draw the jumper JP1 next to the CPLD (IC7) and all filters are bypassed in receive mode.