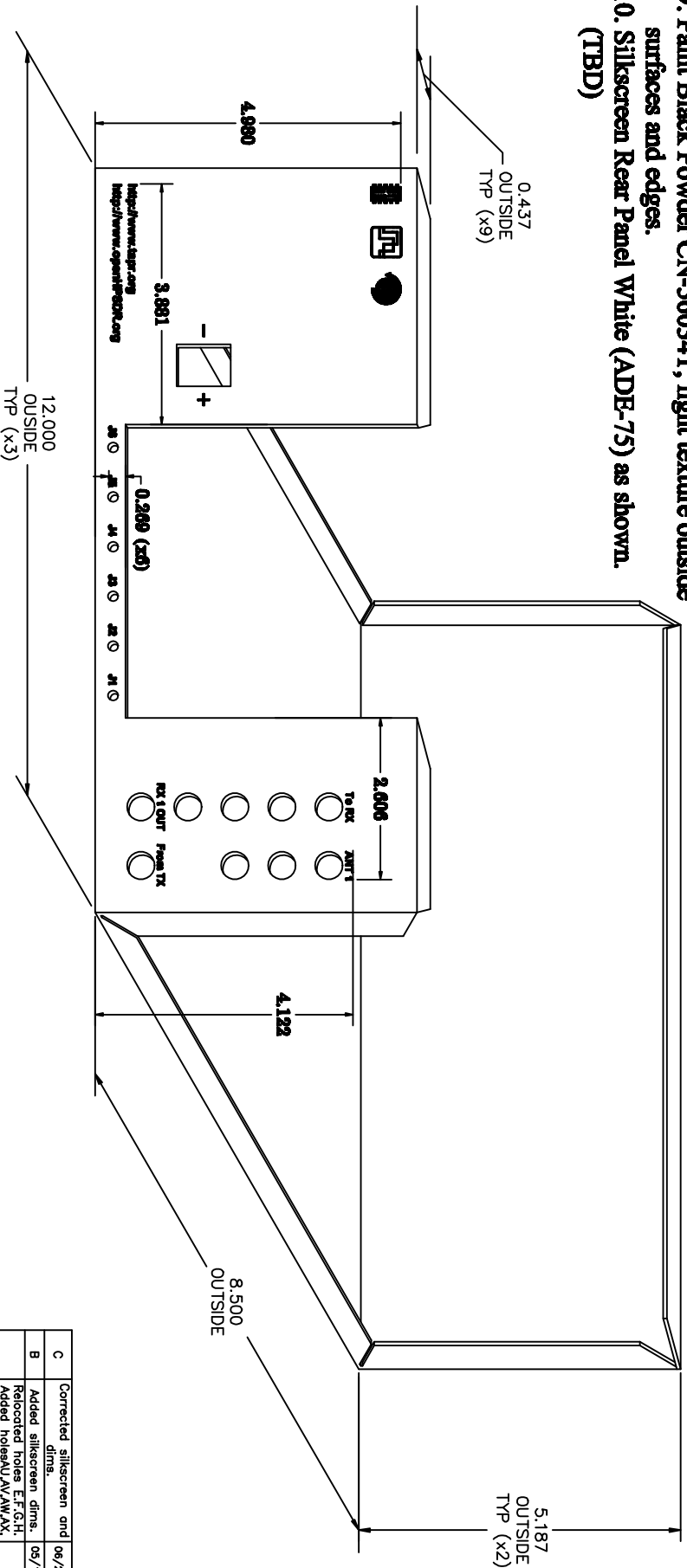


Notes

1. Punch from smooth side.
2. Install (2) Penn nuts 53029 in holes "BA, BB" from smooth side. (F-440-1)
3. Install (28) Penn nuts 53029 in holes "I,J,K,L,M,N,O,P,Q,R,S,T,U,V,W,X,Y,Z,AA,AB,AC,AD,AE,AF,AG,AH,AI,AJ" from Burr side. (F-440-1)
4. Install (4) Penn nuts 53028 in holes "AU,AV,AW,AX" from Burr side. (F-632-1)
5. Bend as shown.
6. Install (6) Standoffs 59055, in holes "E,F,G,H,AY,AZ" from smooth side. (BSOS-440-10)
7. Clean and Etch.
8. Mask (34) Flush Penns with Plugs.
9. Paint Black Powder CN-56034T, light texture outside surfaces and edges.
10. Silkscreen Rear Panel White (ADE-75) as shown. (TBD)



Shearing Information

Blank Size: 48.000 x 30.000 (4 Blanks)
 Makes (4) Parts/Blank 12.662 x 19.324
 Material Used Per Part: 360 Sq.In.
 No. of hits per part = 142.5
 No. of Setups = 13

GEORGE KOPALA, TOLSON/AMERICAN CONSULTING TO GEORGE & JIM CONSULTING TO GEORGE & JIM 12002 0.062 Aluminum SHELLIE HUDLINS 02/11/09		DESCRIPTION Chassis MATERIAL Aluminum SCALE To Fit SHEET 1 OF 2	
REV A Corrected silkscreen and dims. Added silkscreen dims. Relocated holes E,F,G,H Added holesAU,AV,AW,AX AY,AZ. Removed 3 OBRs from far left row.		DATE 09/24/09 05/14/09 03/26/09	

TOT TEN-TEC INC.
 SEVERVILLE, TENN.